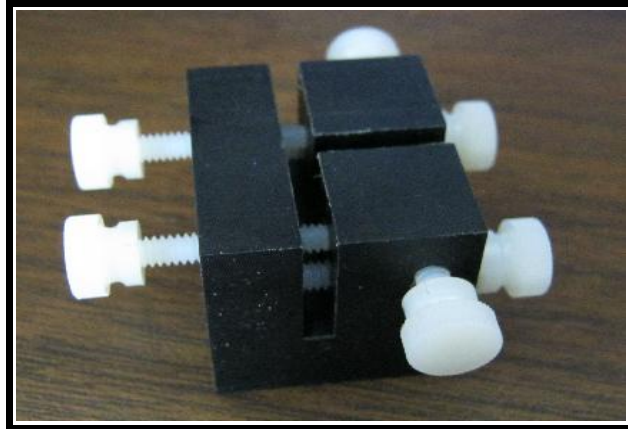
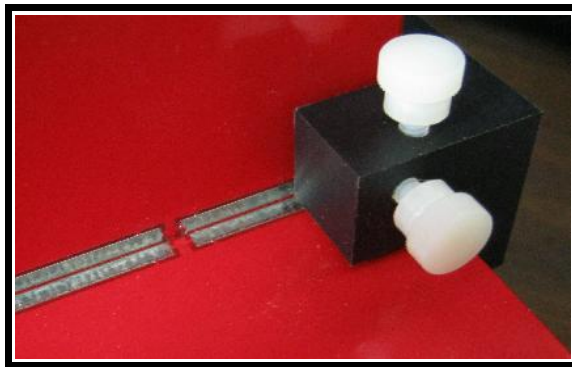


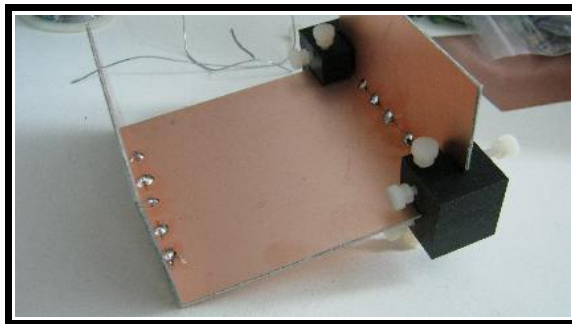
The Revolutionary SBSS from W1REX & QRPme



It is a machined engineered plastic block with square faces, milled perpendicular slots and a plethora of knurled head nylon screws.....



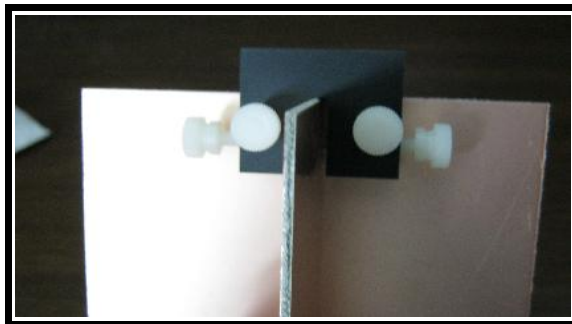
It's intended purpose is to hold PCB stock at right angles while soldering...here is a single SBSS holding two 'Limerick Construction' case panels at a right angle for soldering...



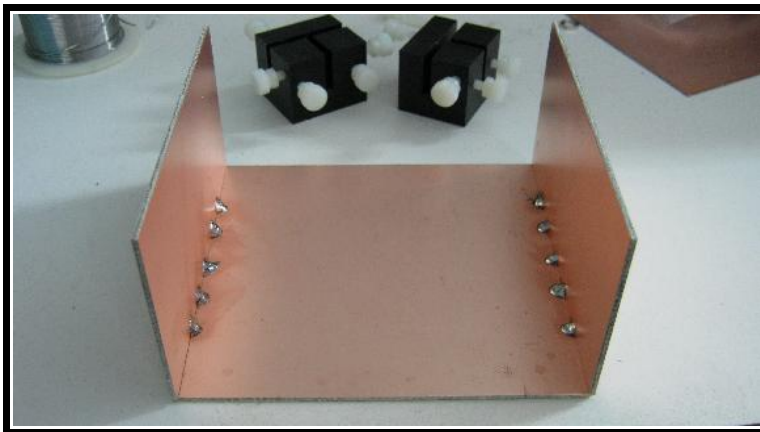
It works even better when paired with a buddy! Making square PCB cases is a snap!



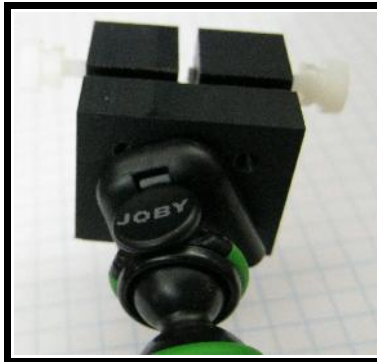
Let a pair of SBSS hold the PCB panels perfectly square while you focus your attention on tack soldering them together...



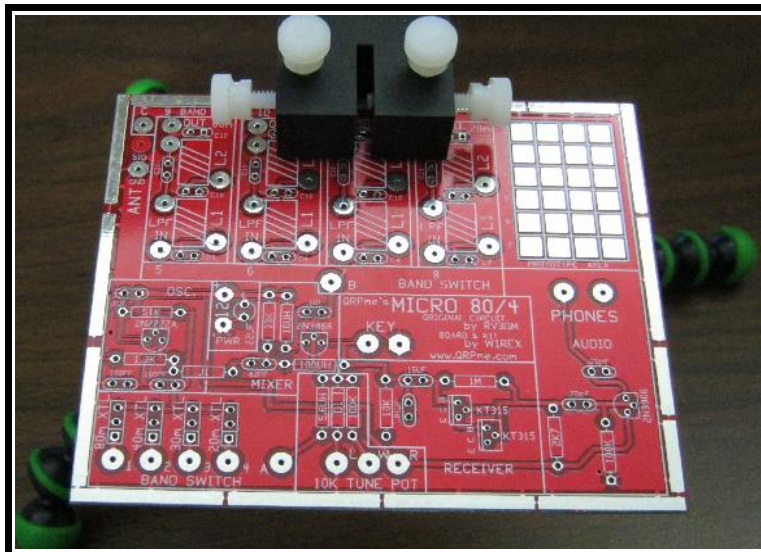
You can also make Tee panels...



A 'first time' chassis made with NO hassles in record time!



With the special tapped hole on the bottom you can mount the SBSS on top of desktop tripods like the Joby™ Gorillapod.

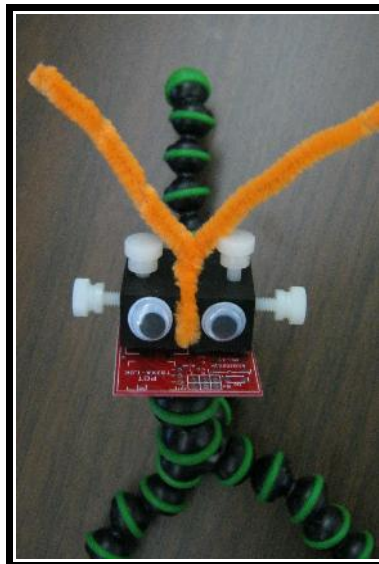


Now its a bench top vice to hold your PCB at any angle for soldering...



Of course you are free to personalize your SBSS when your get it home... I've nicknamed mine....are you ready for it?

Solder Bot Square Stance



and he loves to chew on my circuit boards all day long... if I let him!

Enjoy!
WIREX